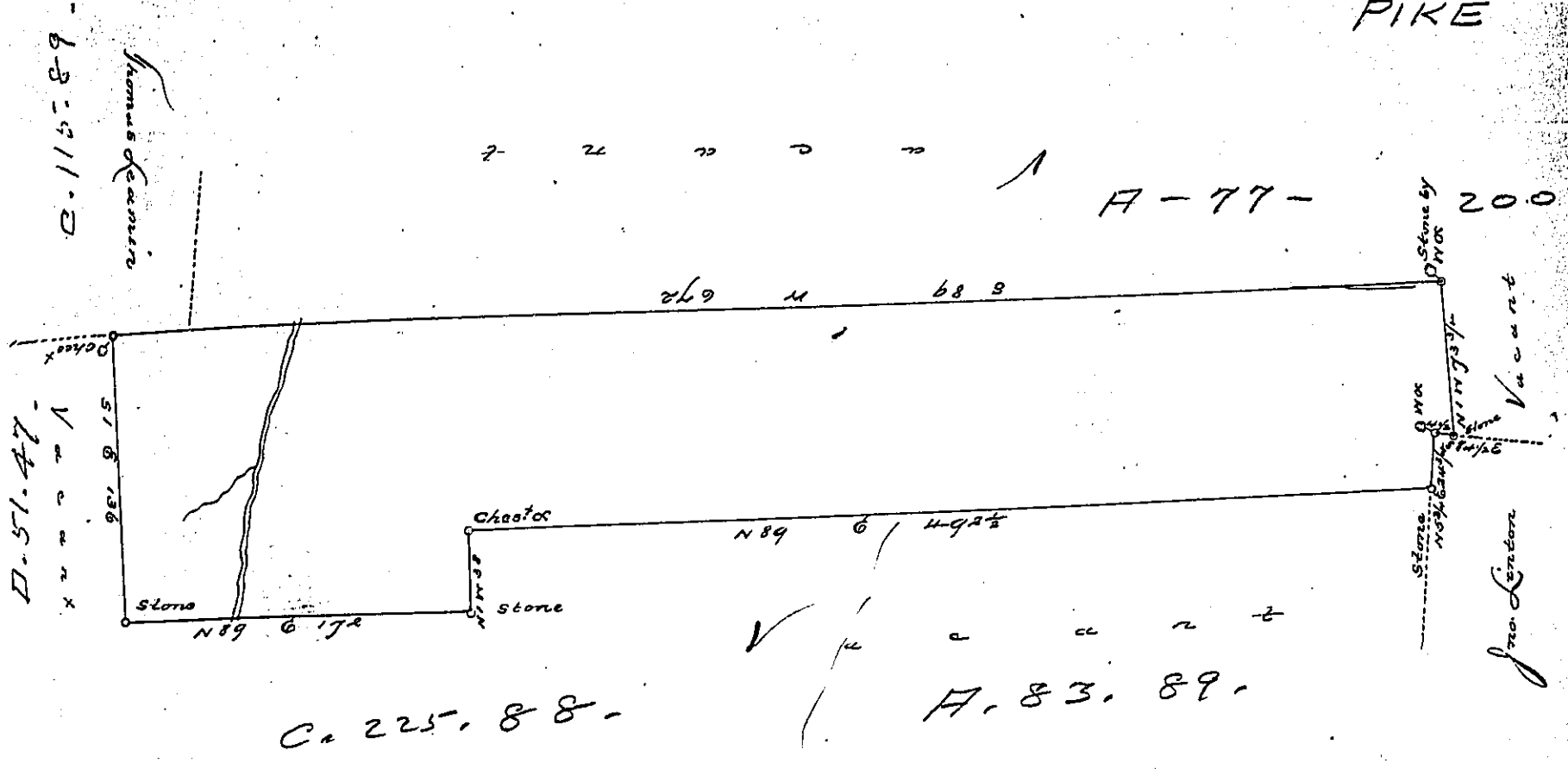


Bl. Grove
PIKE



By Virtue of a Warrant dated the 11th February, 1793, Surveyed the 27th June 1793.
 to Isaac Wikoff the above described tract of land Situate on a southerly
 branch of Shoholy Creek in the County of Northampton; Containing four
 hundred and twenty six acres & the allowance of 6 yd Ct &c
 P. Geo. Palmer

To Daniel Brodhead Esq^r
 Surveyor General

IN TESTIMONY that the above is a copy of the original remaining on file in the
 Department of Internal Affairs of Pennsylvania, made con-
 formably to an Act of Assembly approved the 16th day of
 February, 1833, I have hereunto set my Hand and caused
 the Seal of said Department to be affixed at Harrisburg, this
 fourth day of January, 1898,
 James W. Latta
 Secretary of Internal Affairs.